

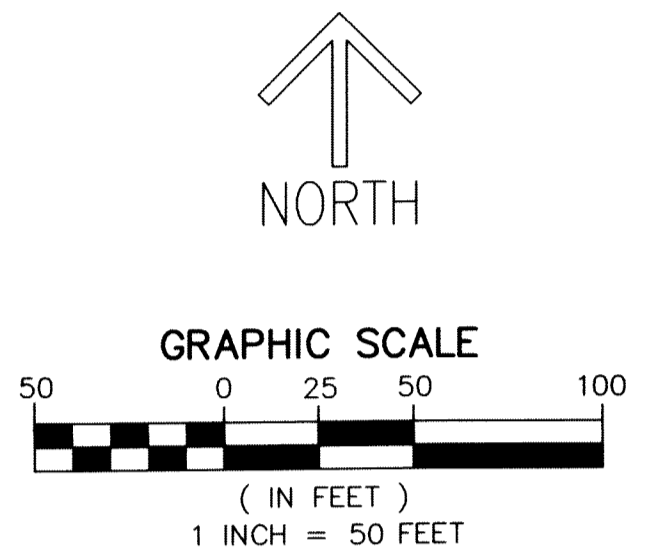
# AVENIR - POD 15

BEING A REPLAT OF A PORTION OF PARCEL A-1, AVENIR, AS RECORDED IN PLAT BOOK 127 PAGE 85, OF THE PUBLIC RECORDS OF PALM BEACH COUNTY, FLORIDA LYING IN SECTIONS 9, 10, 15 AND 16, TOWNSHIP 42 SOUTH, RANGE 41 EAST, CITY OF PALM BEACH GARDENS, PALM BEACH COUNTY, FLORIDA.

THIS INSTRUMENT PREPARED BY  
RONNIE L. FURNISS  
OF  
**CAULFIELD and WHEELER, INC.**  
SURVEYORS - ENGINEERS - PLANNERS  
7900 GLADES ROAD, SUITE 100  
BOCA RATON, FLORIDA 33434 - (561)392-1991  
CERTIFICATE OF AUTHORIZATION NO. LB3591  
OCTOBER 2022

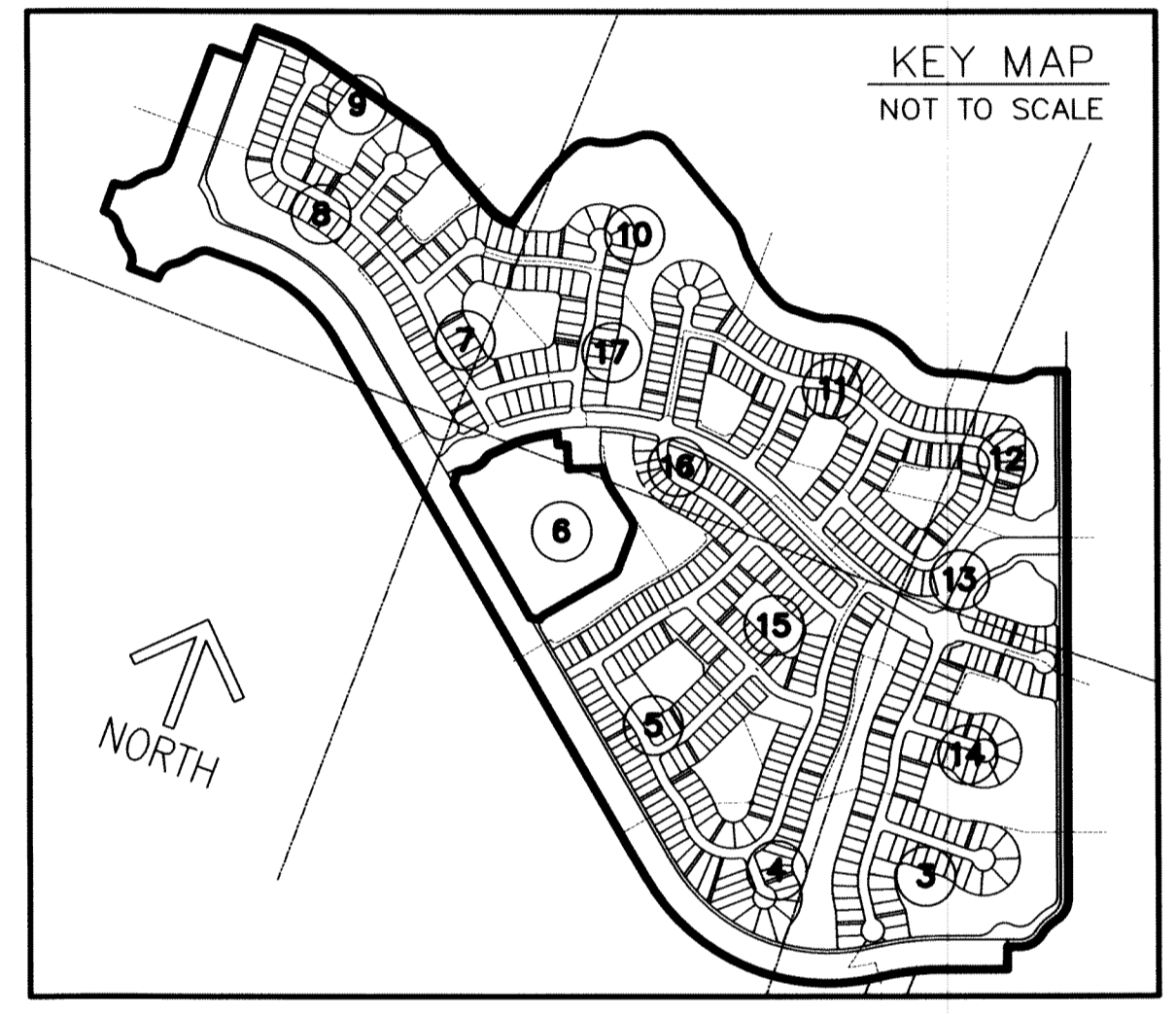
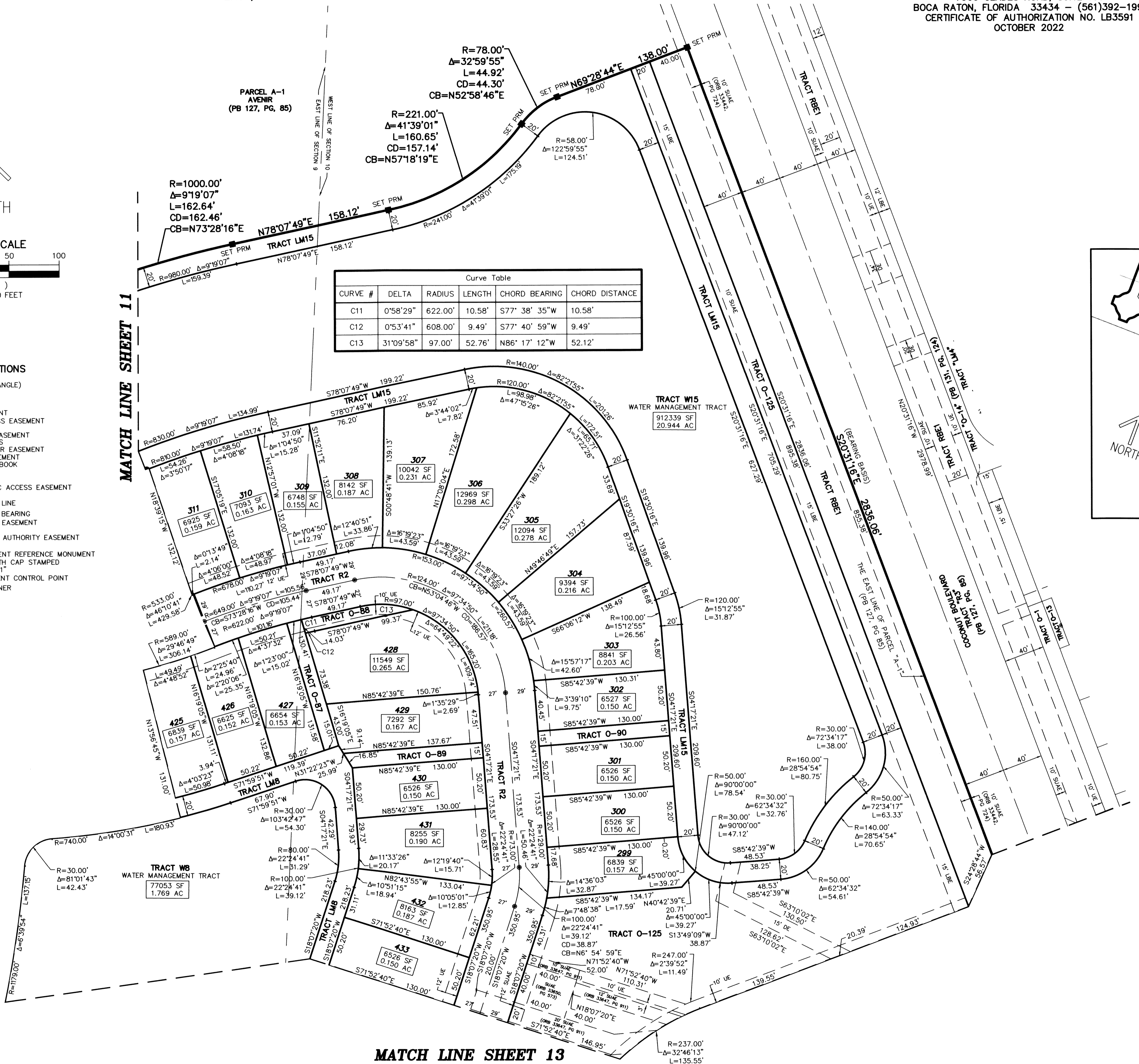
190

SHEET 12 OF 17



- LEGEND/ABBREVIATIONS**
- CL - CENTERLINE
  - Δ - DELTA (CENTRAL ANGLE)
  - AC - ACRES
  - CB - CHORD BEARING
  - CD - CHORD DISTANCE
  - DE - DRAINAGE EASEMENT
  - EAE - EMERGENCY ACCESS EASEMENT
  - L - ARC LENGTH
  - LAE - LIMITED ACCESS EASEMENT
  - LB - LICENSED BUSINESS
  - LBE - LANDSCAPE BUFFER EASEMENT
  - LSE - LIFT STATION EASEMENT
  - O.R.B. - OFFICIAL RECORD BOOK
  - PB - PLAT BOOK
  - PG - PAGE
  - P.P.A.E. - PERPETUAL PUBLIC ACCESS EASEMENT
  - R - RADIUS
  - (R) - INDICATES RADIAL LINE
  - RB - INDICATES RADIAL BEARING
  - RBE - ROADWAY BUFFER EASEMENT
  - SF - SQUARE FEET
  - SUAE - SEACOAST UTILITY AUTHORITY EASEMENT
  - UE - UTILITY EASEMENT
  - PRM - DENOTES PERMANENT REFERENCE MONUMENT
  - 5/8" IRON ROD WITH CAP STAMPED "C&W PRM LB 3591"
  - CP - DENOTES PERMANENT CONTROL POINT
  - 1/4 SECTION CORNER
  - ✕ - SECTION CORNER

CURVE #	DELTA	RADIUS	LENGTH	CHORD BEARING	CHORD DISTANCE
C11	0°58'29"	622.00'	10.58'	S77° 38' 35"W	10.58'
C12	0°53'41"	608.00'	9.49'	S77° 40' 59"W	9.49'
C13	31°09'58"	97.00'	52.76'	N86° 17' 12"W	52.12'



MATCH LINE SHEET 13